

49/117  
DRAWING NUMBER

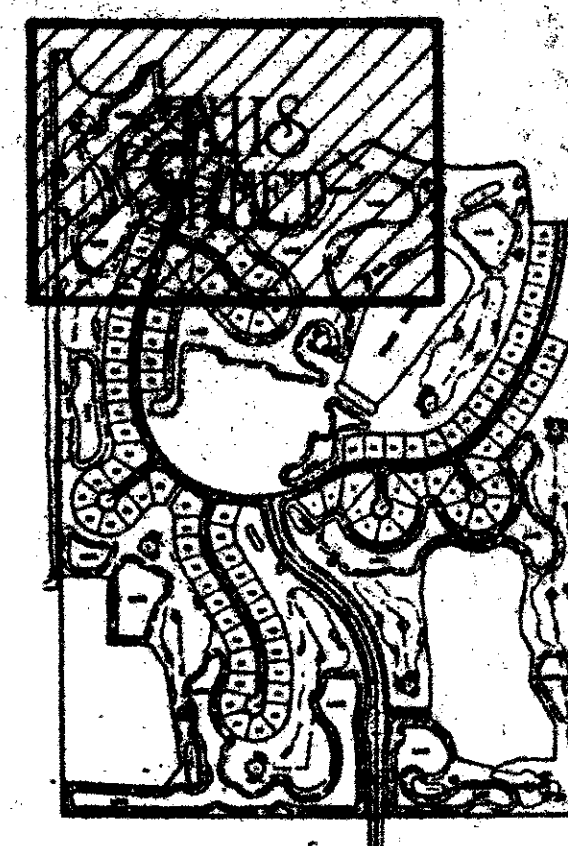
# A part of SOUTHERN MANOR P.U.D. STONEBRIDGE PLAT NO. 1

(a planned unit development)

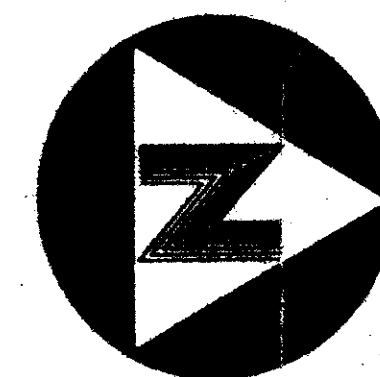
Lying in the South One-Half (S.1/2) of Block 69, Palm Beach Farms Company, Plat No. 3, Plat Book 2, Pages 45-54 (Inclusive),  
Section 36, Township 46 South, Range 41 East, Palm Beach County, Florida  
June, 1984  
Sheet 6 of 8

PALM BEACH FARMS COMPANY  
PLAT NO. 3  
PLAT BOOK 2, PAGES 45-54 (INCLUSIVE)

PALM BEACH FARMS COMPANY  
PLAT NO. 3  
PLAT BOOK 2, PAGES 45-54 (INCLUSIVE)



KEY MAP



Graphic Scale

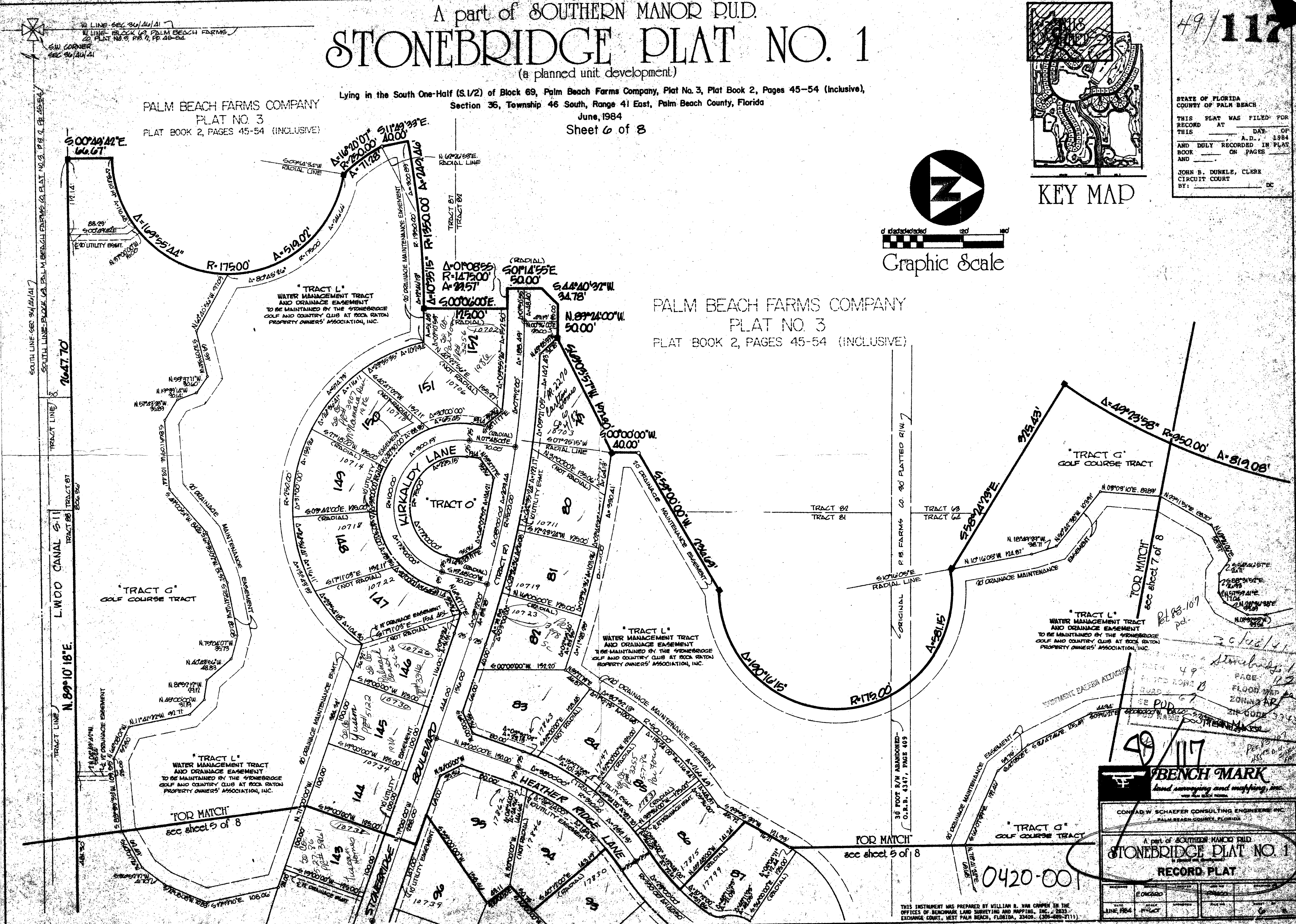
STATE OF FLORIDA  
COUNTY OF PALM BEACH  
THIS PLAT WAS FILED FOR  
RECORD AT \_\_\_\_\_ DAY OF  
THIS \_\_\_\_\_ A.D., 1984  
AND DULY RECORDED IN PLAT  
BOOK \_\_\_\_\_ ON PAGE  
AND \_\_\_\_\_  
JOHN B. DUNKLE, CLERK  
CIRCUIT COURT  
BY: \_\_\_\_\_ DC

49/117

DRAWING NUMBER

DRAWING NUMBER

DRAWING NUMBER



Handwritten notes and signatures, including 'Stonebridge 49/117' and 'BENCH MARK'.

**BENCH MARK**  
land surveying and mapping, inc.  
CONRAD W. SCHAEFER CONSULTING ENGINEERS, INC.  
PALM BEACH COUNTY, FLORIDA  
A part of SOUTHERN MANOR P.U.D.  
**STONEBRIDGE PLAT NO. 1**  
RECORD PLAT

DATE	FILED	BY	BOOK	PAGE
JUNE 1984	1140	W. VAN CAMPEN	2	49

THIS INSTRUMENT WAS PREPARED BY WILLIAM B. VAN CAMPEN IN THE OFFICES OF BENCHMARK LAND SURVEYING AND MAPPING, INC., 2833 EXCHANGE COURT, WEST PALM BEACH, FLORIDA, 33409. (305-832-7111)